

The State Department of Education (SDE) Regulates School Bus Transportation

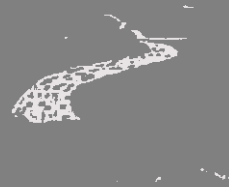
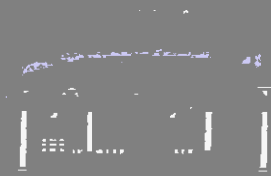
A local school system can give service only within the limits of the resources made available by State government. (Absenteeism, discipline problems, breakdowns, inclement weather, etc. may result in second trips and routing disruptions.

1 e 3 a

u

11

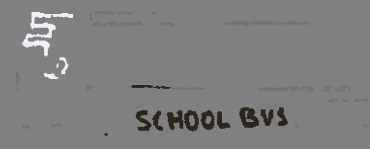
11



Bus Stop Supervis

Parents and guardia
responsible for the
and conduct of the
going to and from
at the bus stop. (S

RED



Riding the bus is a privilege and
not a right

It is against the law



Students

will be denied transportation if they approach the bus with any of the items listed above

Unassigned Riders: Due to buses being at or near capacity, only students registered with the transportation department with assigned bus stops will be permitted to ride. **Students will not be allowed to ride home with friends or to unassigned bus stops even if they have a note.**

(emergency)

(803) 593-7143



local transportation office

on your behalf

please contact your